

THANK YOU!

We care about
what you think.

WILDWOOD
PARK DISTRICT

WILDWOOD PARK DISTRICT
COMMUNITY NEEDS
ASSESSMENT REPORT **2024**

TABLE OF CONTENTS



Study Overview.....3

Demographics.....4

Survey Highlights.....5

Strengths and Recommendations.....6-7

Updates and Improvements.....8-16

General Comments/Open Feedback.....17

Conclusion.....18

COMMUNITY NEEDS ASSESSMENT STUDY OVERVIEW



OVERVIEW

In the winter of 2023, the Wildwood Park District (WPD) conducted a comprehensive Community Needs Assessment Survey to gain insight into the needs within our community, strengths and areas of improvement of the Park District, and otherwise gather ideas, interests, and opinions from our residents.

PURPOSE

The purpose of this community study was to obtain input from Wildwood residents on all areas of WPD operations including use, condition, evaluation, and open feedback of: 1) WPD Parks and Facilities; 2) Maintenance; 3) Park Safety; 4) Programs and Special Events; 5) Administration and Customer Service; 6) Marketing and Communications; 7) Schoolhouse Adventures Community Preschool; and 8) Board of Commissioners. Furthermore, the Community Needs Assessment Survey serves multiple purposes, such as: 1) allows tax-paying residents the opportunity to voice their opinions related to future services and desired amenities; 2) survey results may also be used to identify and clarify concerns and assist leadership in decision making and financial resource allocation; 3) provides data and feedback that allows the WPD to build upon existing continuous improvement initiatives; and 4) helps the WPD set achievable and practical goals for the future.

METHODS

The 91-question survey link was emailed to a database of 502 WPD residents. Analytics indicated 56% (208 residents) opened the email and 11% (55 residents) clicked on the survey link. In addition, the survey and link was promoted on the WPD website, numerous social media platforms and pages, and a hard copy was available at the WPD guest services front desk. Data collection took place from December 15th through January 31st. A total of 134 survey responses were collected.

GOALS

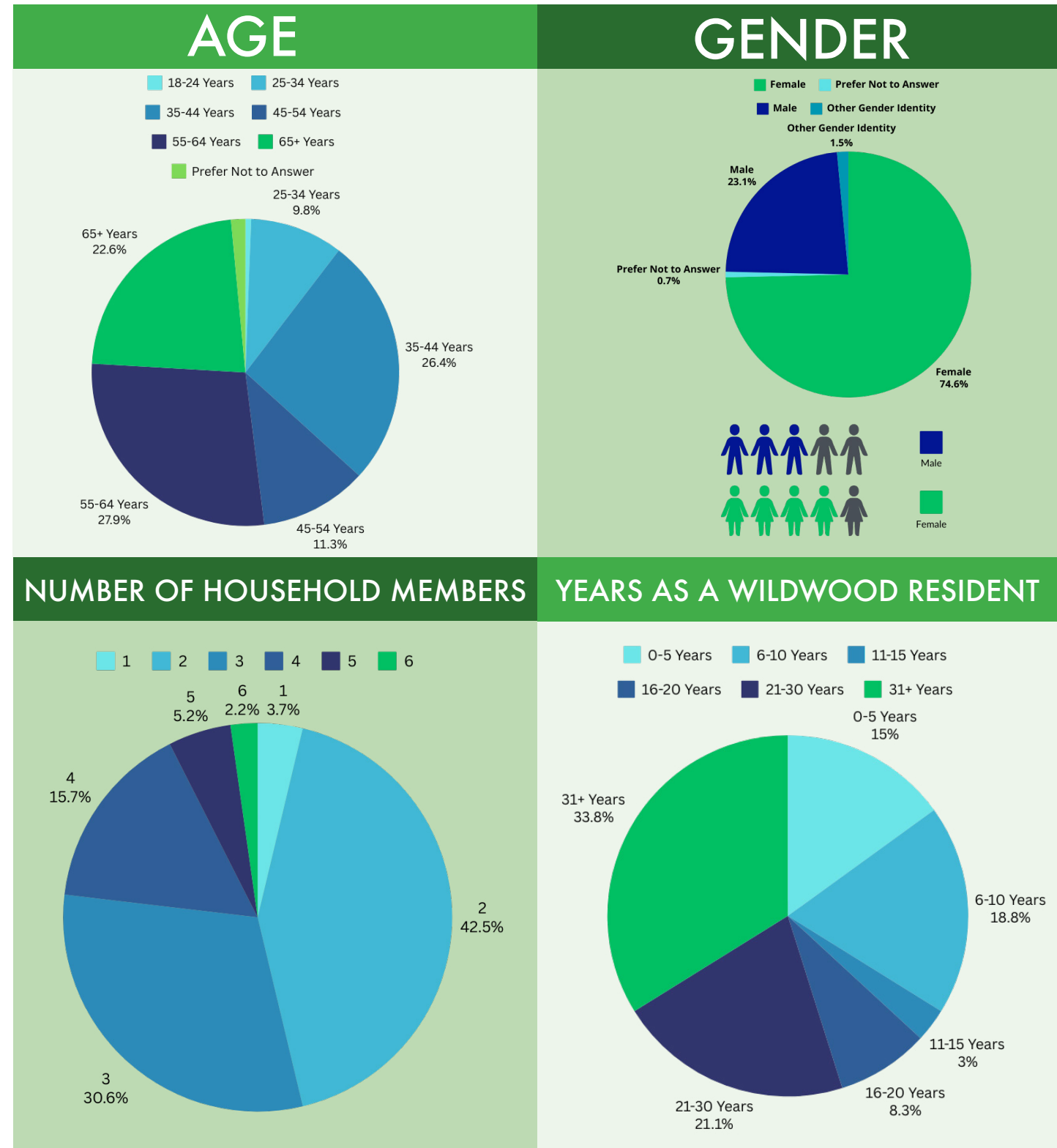
The WPD established multiple goals from the Community Needs Assessment Survey: 1) understand overall satisfaction with existing parks, facilities, programs, services, and operations; 2) assess residents’ opinions regarding future parks, facilities, programs, services, and operations; and 3) utilize the results to make recommendations for improvements and to engage the WPD Board of Commissioners and staff in conversations concerning the future development of and planning for parks, facilities, programs, services, and operations.



COMMUNITY NEEDS ASSESSMENT

DEMOGRAPHICS

Questions 1-5 of the Community Needs Assessment Survey gathered non-identifying demographic data, which gives the WPD insight to certain background, respondent, and household characteristics of our community, allowing us to tailor our offerings and activities to better serve our residents. Below are the key findings:



COMMUNITY NEEDS ASSESSMENT

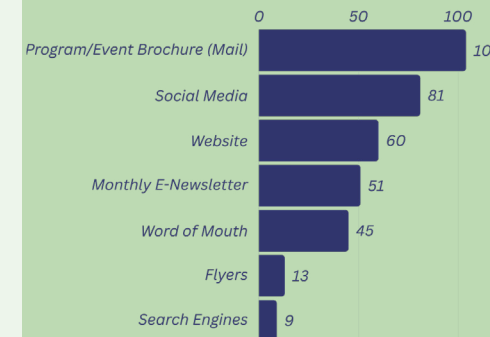
SURVEY RESULT HIGHLIGHTS

ESTEEM RATING

87.4%

of survey respondents believe that the Wildwood Park District enhances the lives of our residents and increases a sense of community.

MOST USED SOURCES OF INFORMATION



84.6%

of survey respondents are very satisfied with customer service provided by the Wildwood Park District office staff.

TOP 5 Most Desired Programs and Events

1. Special Events
2. Adult & Senior Programs
3. Youth Programs
4. Tot & Early Childhood Programs
5. Schoolhouse Adventures Community Preschool

"Thank you to all who make our little subdivision one of the best places to live in Lake County."

PARK SATISFACTION

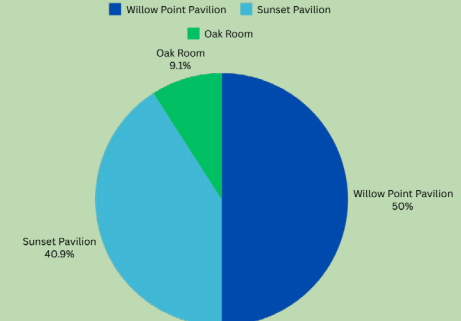


PARK USE

97%

of survey respondents have visited one or more of the 11 Wildwood Park District parks in the past 12 months.

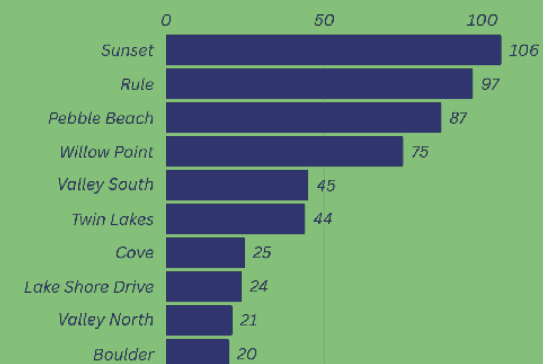
TOP 3 Rental Facilities



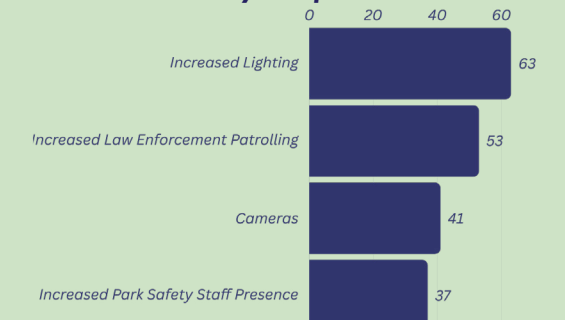
93.9%

of survey respondents say that fees for programs and special events are fair.

MOST VISITED PARKS



MOST DESIRED Park Safety Improvements



COMMUNITY NEEDS ASSESSMENT

STRENGTHS AND RECOMMENDATIONS

Section 2- Parks and Facilities Use and Conditions

Strengths

97.7% of survey respondents rated the overall quality (condition, upkeep, maintenance, and cleanliness) of all Wildwood Park District parks as excellent or good. 97.1% of survey respondents rated the Maintenance Team's use of safety measures while working as excellent or good. 94% of survey respondents rated the overall landscaping and greenspace conditions as excellent or good. 93.7% of respondents who have used park playground equipment in the past 12 months rated the overall quality as excellent or good. 87.8% of respondents who have used either boat ramp rated the overall quality as excellent or good. 85.7% of respondents who have used any Wildwood Park District beach rated the overall quality as excellent or good.

Recommendations

ADA improvements, paved path accessibility, tree planting initiatives, native plant zones, and lake water quality and drainage were consistent areas of interest to develop or expand.

Section 3- Park Safety

Strengths

95.2% of survey respondents rated the friendliness and professionalism of Park Safety and Boat Ramp Monitor staff as excellent or good. 94.7% of respondents rated their overall satisfaction with Park Safety and Boat Ramp Monitor staff's enforcement of boat ramp keys and decals as excellent or good. 91.7% of respondents rated the enforcement and checking of resident parking stickers on vehicles as excellent or good. 88.9% of respondents rated Park Safety and Boat Ramp Monitor staff's overall supervision of parks and amenities as excellent or good.

Recommendations

Respondents showed a desire for increased patrolling and presence of Lake County Sheriff's Office, additional lighting in the parks, and more checking of parking stickers on vehicles parked at parks.

Section 4- Programs and Special Events

Strengths

93.9% of survey respondents believe program and special event fees are priced fairly. 89.1% of respondents rated the overall quality of programs as excellent or good. 87.4% of respondents believe park district programs, events, and offerings enhance the lives of our residents and increase a sense of community. Open-ended survey responses showed a strong appreciation for special events, namely the free Summer Concert Series and Harvest Fest. Respondents liked the convenience of programs and events being located in their neighborhood, and friends/neighbors participating with them.

Recommendations

Adult and teen programming were areas of interest to build upon. Respondents showed a desire for program and event days and times to be expanded.

COMMUNITY NEEDS ASSESSMENT

STRENGTHS AND RECOMMENDATIONS

Section 5- Administration and Customer Service

Strengths

97.1% of survey respondents were satisfied or very satisfied with the responsiveness of staff when contacting the Wildwood Park District. 84.6% of respondents were satisfied or very satisfied with customer service provided by office staff.

Recommendations

Respondents expressed a desire to make the online registration process easier and more user-friendly.

Section 6- Marketing and Communications

Strengths

98.4% of survey respondents rated the overall content of monthly e-newsletters as good or excellent. 91.6% of respondents were satisfied or very satisfied with availability of information about programs, events, news, and announcements. 85.8% of respondents were satisfied or very satisfied with the user-friendliness of the Wildwood Park District website. 84.5% of respondents were satisfied or very satisfied with the transparency of the Wildwood Park District.

Recommendations

Expand social media channels beyond Facebook and Instagram. Increase utilization of Boulder Park marquee sign for all upcoming programs, events, and announcements.

Section 7- Schoolhouse Adventures Community Preschool

Strengths

89.3% of survey respondents are aware that Wildwood Park District has a preschool for children ages 3-5 years. 90.4% of respondents believe the monthly tuition for the 4's & 5's Pre-K Class is priced fairly. 87.5% of respondents believe the monthly tuition for the 3's Class is priced fairly. Open-ended survey responses showed many favorable experiences and praise from past pre-school parents.

Recommendations

Respondents showed a desire for a full-day preschool option and allowing students who aren't toilet-trained.

Section 8- Board of Commissioners

Strengths

Majority of survey respondents are aware that the Wildwood Park District has a Board of Commissioners. Open-ended survey responses praised the integrity and leadership of current board members.

Recommendations

Increase overall public awareness and education of the Board of Commissioners and their duties and responsibilities. Increase public attendance at monthly board meetings.

COMMUNITY NEEDS ASSESSMENT

UPDATES AND IMPROVEMENTS

The Wildwood Park District understands that feedback from our residents is key to our success. Thanks to those who participated in the 2023 Community Needs Assessment Survey, the Wildwood Park District was able to gain critical insight and data that helped us set goals and create a roadmap for success for 2024 and beyond. We're proud to showcase how survey data and feedback was turned into action through the following 2024 updates and improvements.

* **Bold text** indicates a recommendation from the Community Needs Assessment Survey.

Parks and Facilities

Parks

BOULDER PARK

- Refurbished boards and legs of picnic table and sitting bench.
- **Added Mutt Mitt dispenser.**



COVE PARK

- Refurbished boards and legs of picnic table and sitting bench.
- Shoreline cleanup and removal of invasive species (cat tails, water grasses).
- **Added Mutt Mitt dispenser.**
- New park information sign.



LAKE SHORE DRIVE PARK

- Refurbished boards and legs of picnic table and sitting bench.
- **Shoreline cleanup and removal of invasive species (cat tails, water grasses).**
- **Minor drainage improvements.**



OLD PLANK PARK

- **Began Old Plank Park Improvements and Playground Replacement Project:**
 - Removal of existing playground equipment.
 - Began new playground equipment install.
 - Began ADA accessible paved path.
 - Park and treeline cleanup and trimming.



PEBBLE BEACH PARK

- Added Engineered Wood Fiber (EWf) playground mulch in play areas.
- Refurbished boards and legs of picnic table and sitting bench.
- Refurbished boards, legs, and roof of mini pavilion shelter.
- Shoreline Stabilization fabric, rip rap, and **native plants added** along shoreline and inside cove. Additional rip rap added to protect boat ramp
- Replaced grill.
- Replacement of damaged park entrance wooden cable-system posts.
- Playground component fixes and parts replacement.

COMMUNITY NEEDS ASSESSMENT

UPDATES AND IMPROVEMENTS

RULE PARK

- Replacement of damaged park entrance wooden cable-system posts.
- **Volunteer and staff led Gages Lake shoreline clearing of buckthorn, brush, and trees.**
- **Volunteer and staff led treeline clearing of brush, trees, and stump grinding along Sears Boulevard.**
- In-house patching, striping, and marking of Rule Park parking lot.
- Pressure washing and refurbishing of Gaga Pit.



SUNSET PARK

- Added Engineered Wood Fiber (EWf) playground mulch in play areas.
- New congruent atlas-style piers (3) with rubber bumpers and metal cleats.
- Addition of 7.5 tons of mason beach sand.
- **Addition of ADA accessible walking platform adjacent to boat ramp.**
- Framed in sitting benches and garbage cans adjacent to ADA walking platform and trailer parking spots.
- Sunset pavilion upgrades including replacing wood framing, and repainting posts and entire exterior wood structure.
- **Leveled park entrance points with stable crushed gravel.**
- Replacement of damaged park entrance wooden cable-system posts.
- Refurbished boards and legs of picnic table and sitting bench
- Refurbished boards and legs of 12' pavilion ADA picnic tables.
- Refurbished two mini grills and large pavilion grill.
- **Stabilized and filled in gaps in shoreline seawall.**
- **In conjunction with Warren Township Highway Department, re-laid, re-opened and replaced drainage pipe between the Channel and Gages Lake under Island Avenue.**
- **Planted three new Sugar Maple trees.**



COMMUNITY NEEDS ASSESSMENT

UPDATES AND IMPROVEMENTS

TWIN LAKES PARK

- Shoreline cleanup and removal of invasive plants (i.e. cat tails, water grasses).
- Split-rail fence replacement along Twin Lakes Boulevard.
- Pressure washed walking bridge in preparation for staining.
- Refurbished boards and legs of picnic table.
- Added Engineered Wood Fiber (EWF) playground mulch in play areas.
- Replacement of damaged park entrance wooden cable-system posts.



VALLEY SOUTH PARK

- Shoreline cleanup and removal of invasive plants (i.e. cat tails, water grasses).
- Tree trimming and clearing of brush for fishing access areas.
- Addition of 7.5 tons of mason beach sand and beach area expansion.
- Picnic bench restoration.
- Completion of park stormwater drainage re-design, lake inflow drain structure, and plunge pool dam with Lake County Stormwater Management/Warren Township. Native plant barrier added Spring 2024.

VALLEY NORTH PARK

- Shoreline cleanup and removal of invasive plants (i.e. cat tails, water grasses).
- Consistent clearing of outflow drain and addition of rip rap around drain.
- Removal and clearing of dead and rotting shoreline scrub trees creating greater visibility.
- Replacement of all park entrance wooden cable-system posts.
- Tree trimming throughout park.
- Completion of park drainage re-design and lake outflow drain structure with Lake County Stormwater Management/Warren Township.



COMMUNITY NEEDS ASSESSMENT

UPDATES AND IMPROVEMENTS

WILLOW POINT PARK

- Shoreline cleanup and removal of invasive plants (i.e. cat tails, water grasses)
- Refresh of Engineered Wood Fiber (EWF) playground mulch in play areas.
- Refurbished boards and legs of picnic table and sitting bench.
- Refurbished boards and legs of 12' pavilion ADA picnic tables.
- Refurbished two mini grills and large pavilion grill.
- Replacement of damaged park entrance wooden cable-system posts.
- Planted two new trees (Autumn Blaze Maple & Swamp White Oak).
- Playground component fixes and parts replacement.
- Permanent volleyball net posts painted black and reflective tape added for safety.



Facilities

RULE HOUSE COMMUNITY CENTER

Investing in the long-term future of facilities by:

- Rule House Community Center flat roof replacement.



RULE PARK SECURITY BUILDING

Investing in the long-term future of facilities by:

- Security Garage full roof replacement.
- Security Garage drainage system install.
- Security Garage foundation and wood framing replacement.

MAINTENANCE BUILDINGS

Investing in the long-term future of facilities by:

- Maintenance Shop Garage full roof replacement and gutter/downspout installation.



COMMUNITY NEEDS ASSESSMENT

UPDATES AND IMPROVEMENTS

Lake Management

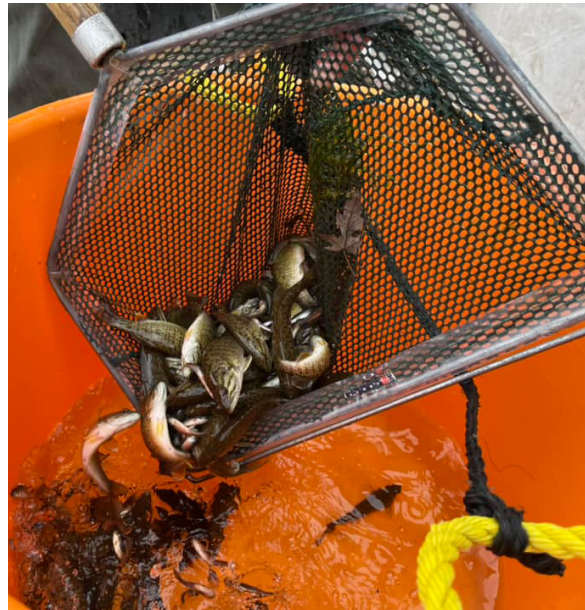
The Wildwood Park District, in conjunction with the Gages Lake Conservation Committee and Illinois Department of Natural Resources, invested in a consistent yearly fish stocking program for both Gages Lake and Valley Lake.

GAGES LAKE

- Summer fish stocking of Channel Catfish at no charge.
- Fall fish stocking of 100 Northern Pike (9-12"), 250 Walleye (5-7"), 250 Walleye (6-8"), and 250 Smallmouth Bass (4-6").

VALLEY LAKE

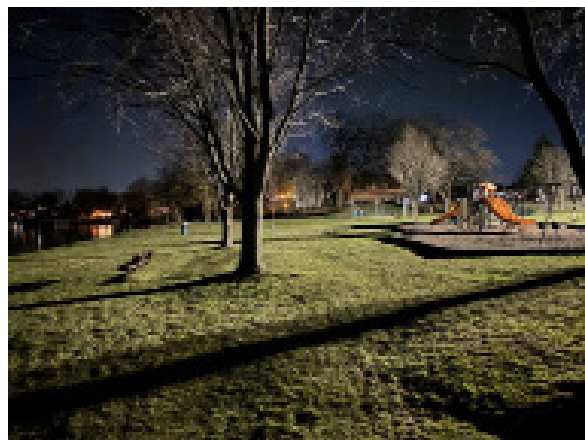
- Spring fish stocking of 100 Bluegill (4-6"), 100 Redear Sunfish (1.5-3"), and 15 non-spawning Triploid Grass Carp (8-11").



Park Safety

SECURITY

- Installed two LED dusk-to-dawn security lights at Sunset Park in March 2024.
- Installed overhead safety light bar on UTV vehicle for safety and visibility.
- Made concerted and continued efforts to work with Lake County Sheriff's Office to have continued presence, especially at Sunset Park on busy summer weekends and holidays.



STAFF

- Improved training and operational standards for Park Safety Staff and Boat Ramp Monitors to manage the busy summer season more effectively, especially holiday weekends. Will continue into 2025 and beyond.
- New high visibility uniforms.



COMMUNITY NEEDS ASSESSMENT

UPDATES AND IMPROVEMENTS

Maintenance

SAFETY

- Vehicles:
 - Upgrades to Park Safety Kawasaki Mule including installation of additional brake light, turn signal system, and overhead safety light bar. These upgrades help create higher visibility and safety for our staff and residents in the parks and on neighborhood streets. **Continued emphasis on maintenance vehicle operations best practices; operating at slow speeds, and utilizing backup alarms and lights.**
 - Continue to utilize high-visibility cones, caution tape, and barriers to maintain safety around powered equipment, staff at work, and incomplete projects.



BEACHES

- Beaches cleaned daily, including removal of seaweed, debris, and finely raking the sand. Will continue to effectively plan for and remove increasing amounts of seaweed.



PLAYGROUNDS

- Daily mulch raking and weed removal.
- Bi-weekly inspections of playground equipment.

Board of Commissioners

- Updated Board of Commissioners page on park district website with Commissioner biographies, Board of Commissioners primary functions, roles and responsibilities, and 2025 election information and resources.
- Stronger communication via e-newsletter, public service announcements, social media, and word of mouth for board vacancies and election procedures and timelines.

Meet the Commissioners

The Wildwood Park District is governed by five resident-elected, non-compensated Commissioners. All Commissioners who serve on the Board are current Wildwood Park District residents, and serve for a six year term of office.



Becky Jante, President
 Year Elected: 2019
 Term Ends: 2025
 Email: bjante@wildwoodparkdistrict.com
Biography
 Becky and her husband, Larry, have called Wildwood home since 2004. She earned her Bachelor of Science degree in Finance from the University of Illinois, and worked for State Farm Insurance before raising her two daughters. Becky and her family enjoy all water sports, and she can often be seen enjoying the Wildwood parks and walking her dogs. Becky loves serving on the Wildwood Park District Board of Commissioners, specifically because it allows her to connect with the community and make a positive impact.



Matt Brueck, Vice President
 Year Elected: 2019
 Term Ends: 2025
 Email: mbrueck@wildwoodparkdistrict.com
Biography
 Matt and his wife, Jen, moved to Wildwood in 2004. They have two boys who grew up attending the Wildwood Park District Summer Camps and have now been Camp Counselors themselves for several years. Matt never expected to run for the Wildwood Park District Board of Commissioners, but after years of attending board meetings, he saw areas for improvement that he felt confident he could help with and make positive changes for the community. Matt has a Bachelor's of Science Degree in Mechanical Engineering from Purdue University-West Lafayette and a Masters of Business Administration Degree from Lake Forest Graduate School of Management. He has worked for Honeywell for 26 years in Technical Sales Engineering Management. In his free time, Matt loves to tournament bass fish.

COMMUNITY NEEDS ASSESSMENT UPDATES AND IMPROVEMENTS

Programs and Special Events

PROGRAMS

- Infrastructure:
 - Swim Lessons & Water Safety Program floating swim platform improvements including new ladder, hardware, pressure treated wood boards, anti-slip tread, and paint.
 - Introduced Summer Camp Program cell phone to directly connect parents and Lead Camp Counselor.
 - Introduced Summer Camp Weekly E-Newsletter.
 - Implemented Lead Camp Counselor role for Summer Camp Program.
- Cost Savings
 - Parent volunteer coaches for Intro to T-Ball and Tot Soccer programs.
 - Gift card donations from local businesses for prizes/winners for Adult Bingo.
 - Partnered with Warren-Newport Public Library to offer new and free-of-charge programs like Family Storytime and **Youth STEM Classes**.

SPECIAL EVENTS

- Cost Savings
 - 2024 corporate sponsorship, monetary and in-kind, highest in Park District history.
 - Partnered with Warren Township Center to host larger events free-of-charge, such as Daddy Daughter Dance, to keep expenses down and registration fees affordable.
 - Fostering relationships with community groups such as Warren Township High School Students of Service and the Grayslake Pageant to secure event volunteers.



COMMUNITY NEEDS ASSESSMENT UPDATES AND IMPROVEMENTS

Marketing and Communications

- Utilizing Boulder Park sign board more consistently.
- Monthly E-Newsletter
 - Have grown to 619 subscribers.
 - **Improved content and style.**
- Seasonal Program and Event Brochure (printed and digital versions)
 - Improved design and layout.
 - Implementation of QR codes.
 - Added additional resources:
 - **Board elections and meetings.**
 - Capital projects and planning.
 - **Parking, boating, and safety.**
 - Parks and facilities map.
 - **Park rules, regulations, and ordinances.**
 - Volunteering.
 - Warren Township Senior Center.
 - District affiliates and partner agencies.
 - Job opportunities.
- Social Media
 - Have grown to 2,011 Facebook followers.
 - **Joined additional Facebook groups to reach more people/followers.**
- District Affiliates and Partner Agencies
 - Warren-Newport Public Library promotes park district events on their website.
 - Warren Township Center promotes our events on their Facebook page.
 - Gages Lake Conservation Committee promotes park district events on their Facebook page.
 - Grandwood Park Park District promotes co-hosted events on their website and Facebook page.
- Google and Third Party Websites
 - Improved Google Analytics so Park District events and programs are being picked up and promoted by more third party websites, such as:
 - Visit Lake County
 - All Events
 - Bring Fido
 - Weebly
- Introduced Summer Camp Weekly E-Newsletter.

UPCOMING EVENTS & PROGRAMS



FAMILY STORY TIME (AGE 2-5) ON 2/5
Families are invited to join us for this age-appropriate storytime led by Warren-Newport Public Library. Storytime helps children with early language, pre-reading, focus, social, and motor skills through stories, rhymes, songs, and fun! Please pre-register by Monday, February 3rd



[Register or Learn More](#)



DADDY DAUGHTER DANCE ON 2/7
Put on your dancing shoes, dress in your best formal wear, and join us for a special evening at our Daddy Daughter Dance! Enjoy a night of dancing, laughing, and making memories with your little girl. Fee includes a catered buffet dinner, beverages, dessert, and a keepsake framed photo for each child. Price is based on one adult/child pair. Please pre-register by Monday, February 3rd.

[Register or Learn More](#)



COMMUNITY NEEDS ASSESSMENT

UPDATES AND IMPROVEMENTS

Administration and Customer Service

- Commitment to professional development and educational opportunities for full and part-time staff to enhance skillsets of staff.
 - Illinois Association of Park Districts/Illinois Park and Recreation Association annual conference.
 - Professional Development School.
 - Women in Leisure Services Chi Chapter membership and events.
- Improved ambiance and look of community center lobby and welcome area.
- **Improved online payment process for event vendors, sponsors, and brochure advertisers.**
- Implementation of summer camp cell phone which directly links camp counselors to camp parents.
- Introduced Summer Camp Weekly E-Newsletter.
- Currently developing 3-Year District-Wide Strategic Plan to guide district's short-term goals and objectives, including:
 - **ADA transition.**
 - **Lakes management.**
 - Playground/asset replacement schedule.
 - **Tree inventory.**
 - Community Needs Assessment.



Schoolhouse Adventures Community Preschool

- Saw enrollment growth for 2024-2025 school year.
- Successfully started Parent/Tot Arts and Crafts Class, a preschool feeder program for the 3's Class.
- Preschool Teacher Ms. Tamara Rasmussen completed her Associate in Applied Science in Early Childhood Education degree.
- **First off-site educational field trip to Kroll's Farm.**
- **Implemented Pull-Ups policy allowing preschoolers who are newly toilet-trained to wear Pull-Ups as a safety net.**



COMMUNITY NEEDS ASSESSMENT

GENERAL COMMENTS AND OPEN FEEDBACK

In the Community Needs Assessment Survey, space was provided for additional comments, concerns, and feedback. These comments were compiled and sorted into themes based on content. These recurring themes included Parks and Facilities, Maintenance, Park Safety, Programs and Special Events, Administration and Customer Service, Marketing and Communications, Schoolhouse Adventures Community Preschool, and Board of Commissioners. Comments are summarized below.



Section 2- Parks and Facilities Use and Conditions

Much of the feedback for this section was centered around wanting additional beach cleanup (removing seaweed and debris) beyond the current once-per-morning standard, requesting solutions for keeping geese out of the parks and beach areas, as well as wanting more planting of native plants. Additionally, praise was given for park district efforts and maintenance of parks and facilities.

Section 3- Park Safety

Open feedback included a desire for Park Safety Staff to perform additional checks of parkgoer residency and vehicle stickers, and concerns regarding unleashed dogs. Survey respondents gave thanks and commended the Wildwood Park District and Park Safety Staff for their overall improvement of park safety in recent years.

Section 4- Programs and Special Events

Feedback suggested expanding programs for all ages, namely adults. Much praise was given for the Summer Concert Series and Harvest Fest events.

Section 5- Administration and Customer Service

Not enough feedback provided.

Section 6- Marketing and Communications

Overall, people felt that the e-newsletter content was great and helpful for staying informed on all things Wildwood Park District.

Section 7- Schoolhouse Adventures Community Preschool

Majority of the feedback indicated that parents/caregivers needed a full-day preschool option for their child(ren). Received positive feedback from parents whose child(ren) previously attended and graduated from Schoolhouse Adventures Community Preschool.

Section 8- Board of Commissioners

Feedback indicated a lack of community awareness regarding the existence, roles, and responsibilities of the Wildwood Park District Board of Commissioners. A few mentioned lack of response when reaching out to Commissioners via email. Long-term residents praised the current Board of Commissioners, stating positive improvements and changes compared to years past.

COMMUNITY NEEDS ASSESSMENT

CONCLUSION



Findings from this survey provides key insights into residents' perception of the Wildwood Park District, and engagement, use, and evaluation of programs, special events, parks and facilities, maintenance, park safety, administration and customer service, marketing and communications, Schoolhouse Adventures Community Preschool, and the Board of Commissioners. Input also provides the Wildwood Park District with opinions about future potential capital projects, programming, and special events residents would like to see developed.

Most survey respondents indicated that parks and recreation is important to their overall quality of life and that the Wildwood Park District contributes to their sense of community.

Findings from this study will be a useful tool in the park district's strategic planning process. The findings, feedback, and recommendations of this study help to ensure that strategic decisions enacted by the park district are guided by public input and align with and meet residents' recreation and park needs and preferences.

Thank you!

If you have additional feedback you'd like to share or questions about the Community Needs Assessment, please contact:

Wildwood Park District
847.223.7275
info@wildwoodparkdistrict.com

www.wildwoodparkdistrict.com