

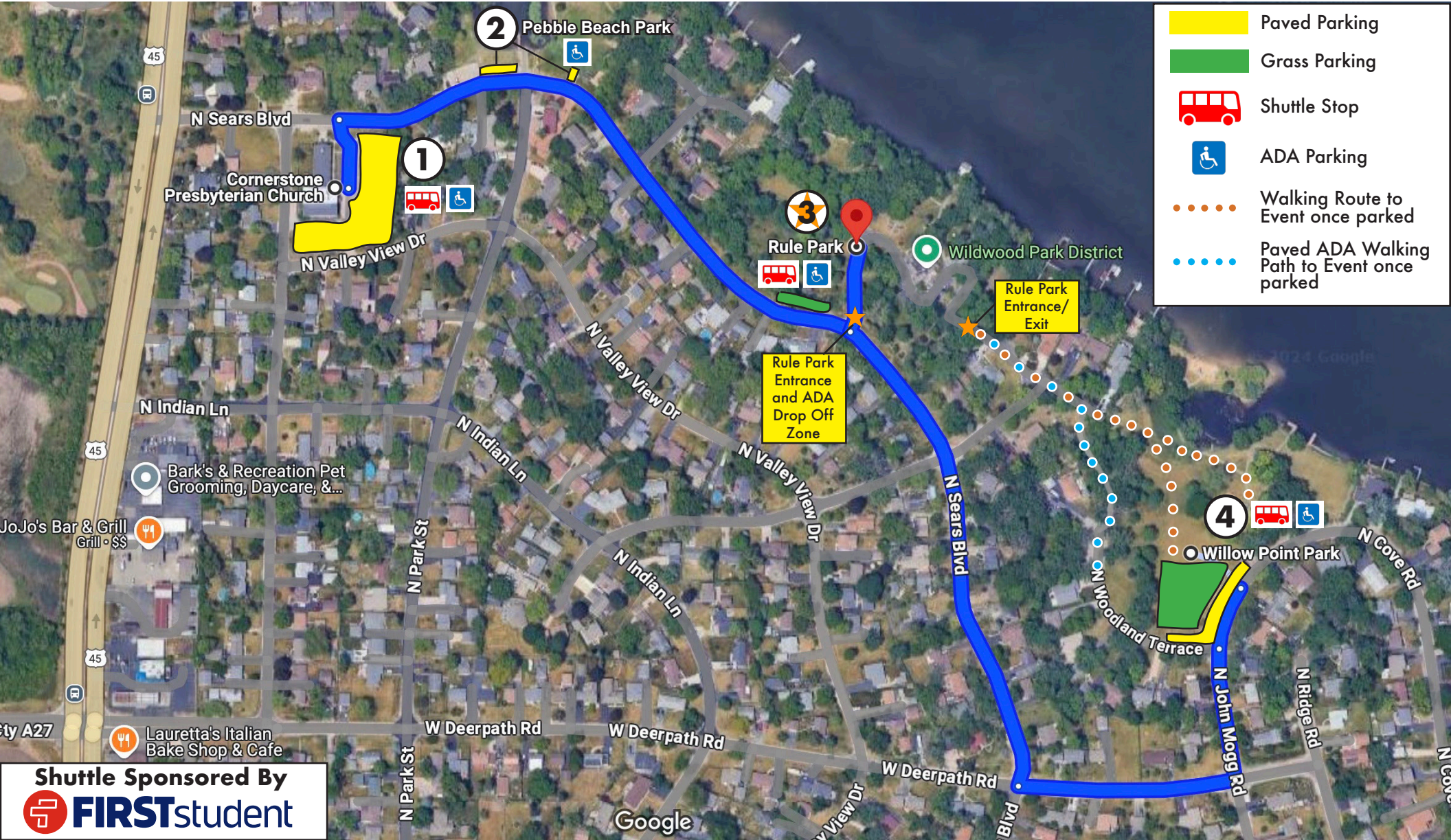


# HARVEST FEST PARKING MAP

- 1** **Cornerstone Presbyterian Church**- 33428 N. Sears Blvd., Wildwood, IL 60030. Parking is for residents and non-residents. Shuttle pickup/dropoff location. **No overnight parking.**
- 2** **Pebble Beach Park**- 33399 N. Sears Blvd., Wildwood, IL 60030. Resident parking only (resident sticker required). 1 ADA parking space available. **No overnight parking.**
- 3** **Event Location, Rule Park**- 33325 N. Sears Blvd., Wildwood, IL 60030. **Parking at Rule Park is ADA only.** 10 ADA parking spaces available. ADA dropoff zone at park entrance. Shuttle pickup/dropoff location. **No overnight parking.**
- 4** **Willow Point Park**- 33666 N. Cove Rd., Wildwood, IL 60030. Paved parking is for residents only (resident sticker required). Grass parking is for residents and non-residents. 2 ADA parking spaces available. **No overnight parking.**

## HELPFUL TIPS

- There is **NO** street parking allowed on Sears Blvd. Please do not block fire hydrants, driveways, or mailboxes. Vehicles in violation are subject to tow.
- Walking or biking is **HIGHLY** encouraged for Wildwood residents.
- Use a rideshare service like Uber or Lyft. Take the hassle out of parking and get home safely and responsibly, especially if you plan to visit our beer tent.
- A First Student shuttle bus (wheelchair accessible) will loop consecutively from 12-6pm between Cornerstone Presbyterian Church, Rule Park, and Willow Point Park to safely shuttle patrons to/from the event and off-site parking.
- Wildwood does not have sidewalks. We are expecting a significant amount of foot and vehicle traffic, especially on Sears Blvd. Please use extreme caution whether driving or walking, abide by posted speed limits and stop signs, and be aware of your surroundings.



Shuttle Sponsored By  
**FIRSTstudent**